

**Evergreen Engineering, Inc.**  
 Civil Engineering • Land Surveying • Land Planning  
 P.O. Box 2861 • Park City, Utah • 84060  
 Phone: (435) 649-4617 • Fax: (435) 649-9219  
 E-mail: office@evergreen-eng.com

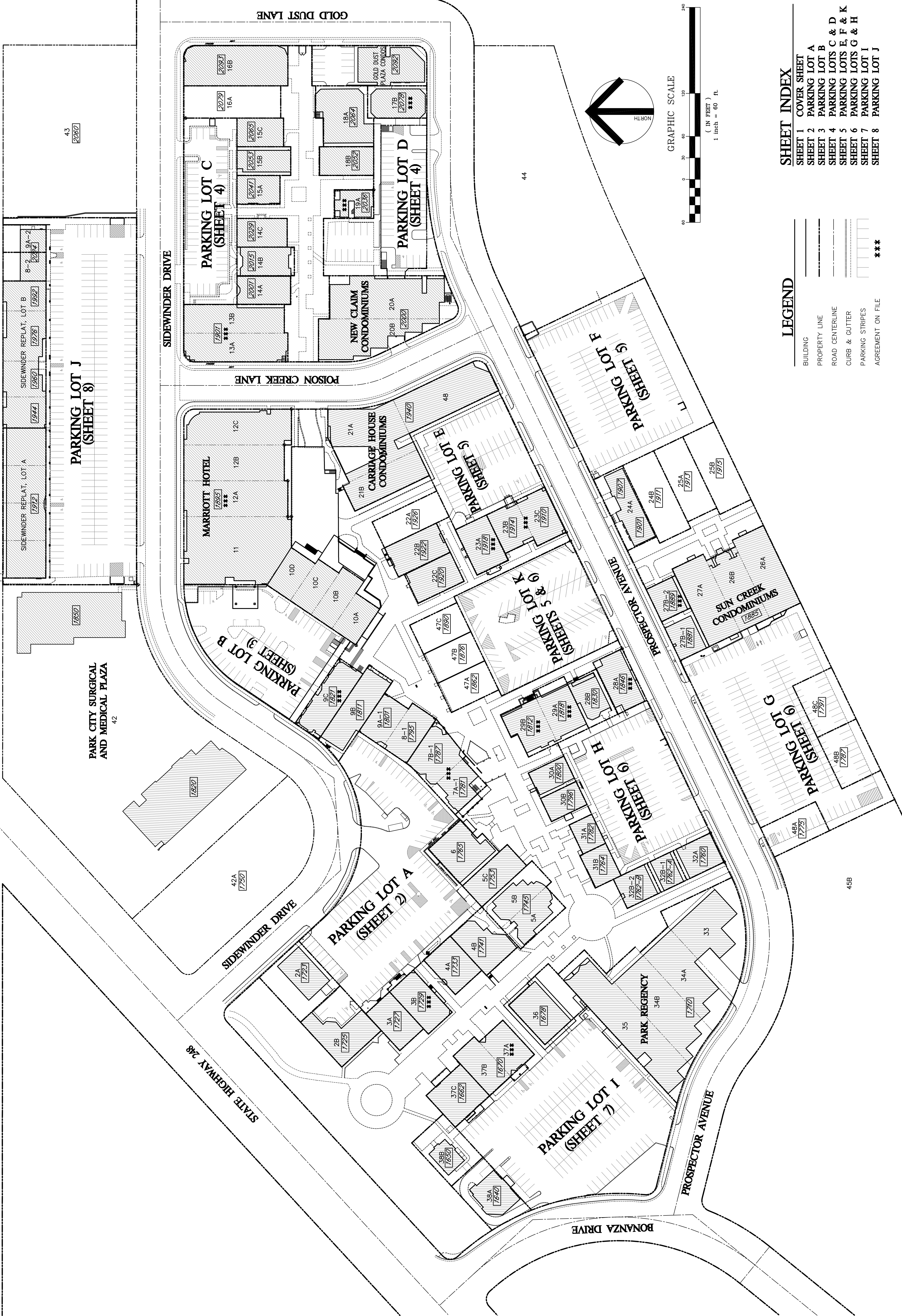
REVISIONS	DATE	BY	COMMENTS

© 2010 Evergreen Engineering, Inc.

SURVEYED BY:  
GRW/ADM  
 DRAWN BY:  
ADM  
 CHECKED BY:  
GRW/ADM

**OVERALL EXISTING CONDITIONS**  
**PROSPECTOR SQUARE P.O.A.**  
 PS-OVERALL  
 JOB NO. 1002  
 P.S.P.O.A.

SHEET 1 OF 8



**SHEET INDEX**

SHEET 1	COVER SHEET
SHEET 2	PARKING LOT A
SHEET 3	PARKING LOT B
SHEET 4	PARKING LOTS C & D
SHEET 5	PARKING LOTS E, F & K
SHEET 6	PARKING LOTS G & H
SHEET 7	PARKING LOT I
SHEET 8	PARKING LOT J

**LEGEND**

—	BUILDING
---	PROPERTY LINE
---	ROAD CENTERLINE
---	CURB & GUTTER
---	PARKING STRIPES
---	AGREEMENT ON FILE
---	***

PLOTTED: NOVEMBER 5, 2013